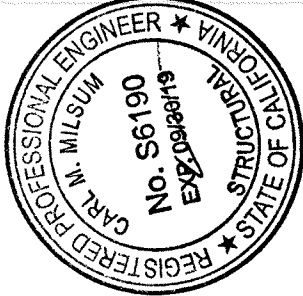
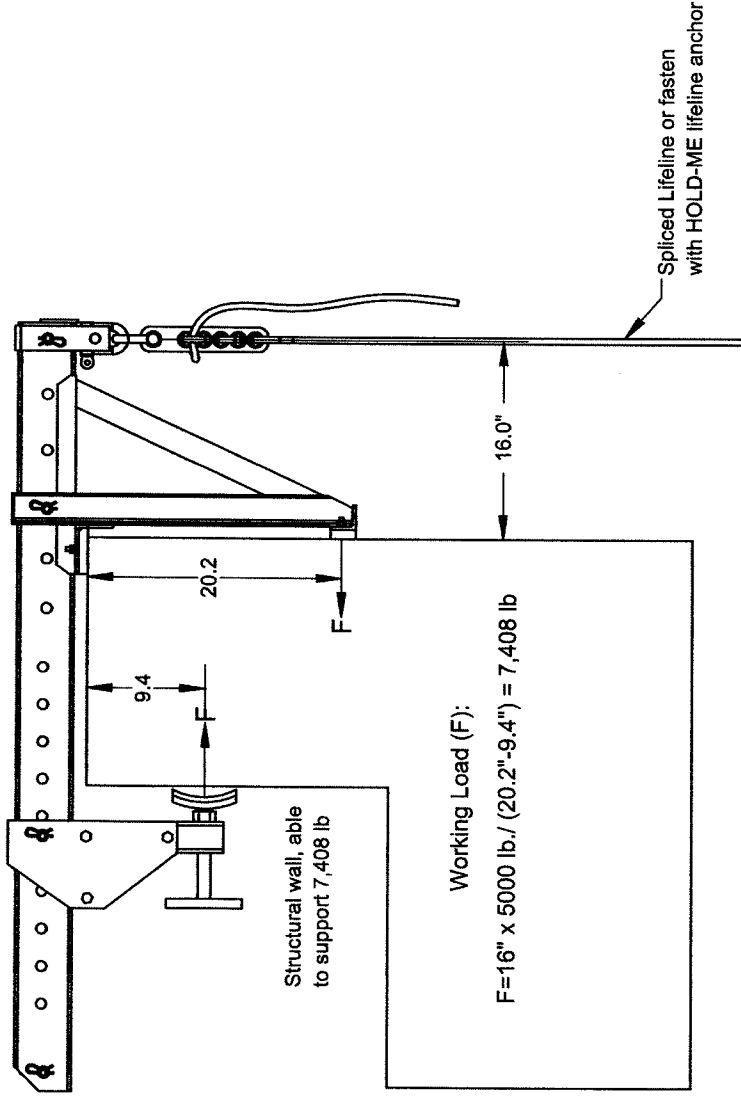


**INSTRUCTIONS FOR USING A PARAPET CLAMP AS A LIFELINE ANCHORAGE DEVICE: (NOT approved for use in Canada)**

There are 2 options to attach a lifeline to a parapet clamp:

1. Connect a spliced lifeline with a shackle to the parapet clamp
2. Use a HOLD-ME lifeline anchor. Do NOT tie a knot, per ANSI standard Z359.1 paragraph 3.2.7.2.2

Move the front support to the 16" outreach setting



**NOTES:**

1. The 1,500 lb load rating label includes a 4 to 1 safety factor per OSHA and ANSI standards pertaining to powered suspended scaffolding. They have been tested to 6,000 lb ultimate load. Therefore, since the Aluminum Parapet Clamp is rated for 1,500 lb, it is approved for use with lifeline as it exceeds the 5,000 lb anchor load requirements per ANSI standard Z359.1 paragraph 7.2.3 and 7.2.4
2. Tieback is optional, but not required

DISTRIBUTED BY  
**ELEVATOR/LLC**  
 Suspended Access-Mast Climbers-Safety Equipment

Joseph W. Aujay  
 Phone (415) 798-0021 Fax (650) 871-7056

<b>A</b>	Released for production	BJA	08-18-14												
<b>REV</b>	Revision Description	By	Date												
	<b>DEBUR AND BREAK SHARP EDGES</b>														
Material: Assembly		Weight: 45 LBS													
Treatment: N/A		Raw material part number: Dimensions in ( ) are in mm Tol. ISO 2768-m													
Assembly		<table border="1"> <tr> <td>&gt;</td> <td>0.5</td> <td>6</td> <td>30</td> <td>120</td> <td>400</td> </tr> <tr> <td>&lt;</td> <td>0.6</td> <td>30</td> <td>120</td> <td>400</td> <td></td> </tr> </table>		>	0.5	6	30	120	400	<	0.6	30	120	400	
>	0.5	6	30	120	400										
<	0.6	30	120	400											
Scale: 1:15 B/A3		Machined surfaces 12.5 ISO 1302													
CAD generated drawing. Do not manually update. Do not scale drawing.		Unless otherwise stated tolerances in inches													
Approved: BJA	Date: 08-18-14	Product Line/Project:	REV. <b>A</b>												
Approved: 03-31-16		<b>Rigging</b>	Part No: 920152 Tiebk App Sheet 1 of 4												
		Application: <b>Parapet Clamp, Aluminum</b>													



The information contained in this drawing is the sole property of Bee Access Products. Any reproduction in part or whole without the written permission of Bee Access Products is strictly prohibited.