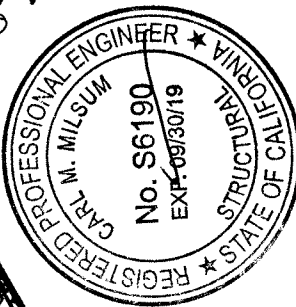
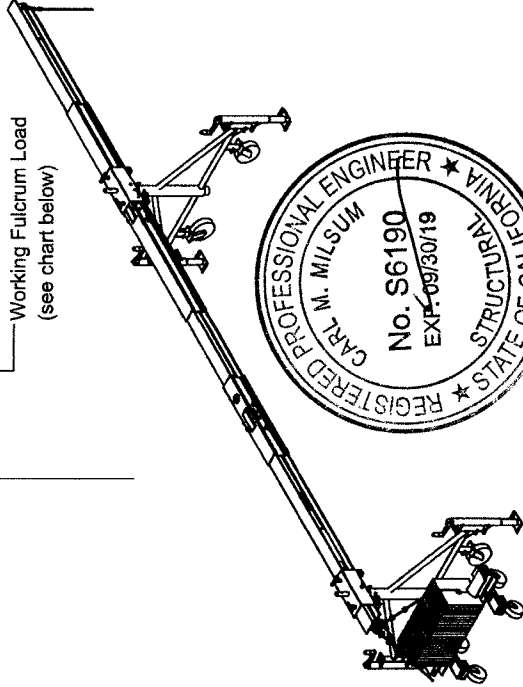
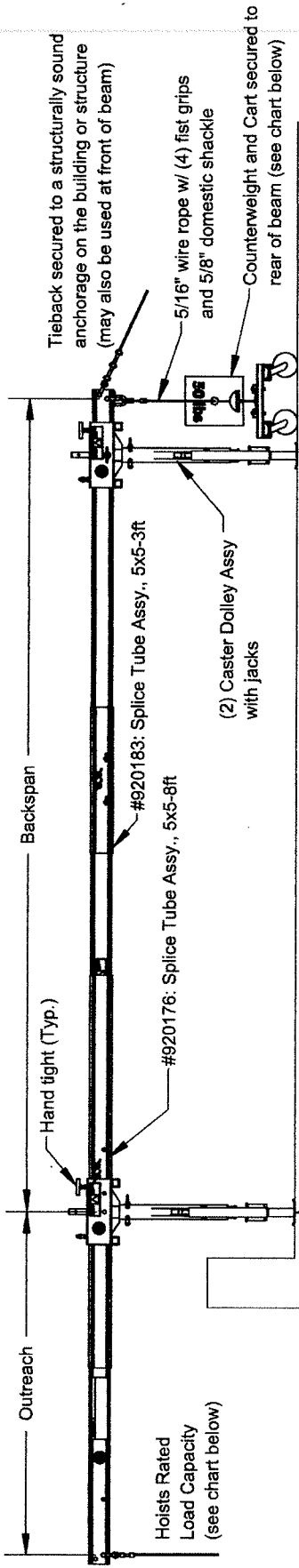


DISTRIBUTED BY
ELEVATOR, LLC
 Suspended Access-Steel Climbers-Safety Equipment

Joseph W. Aujay
 Phone (415) 798-0021 Fax (650) 871-7056

ITEM NO.	QTY.	PART NO.	DESCRIPTION
1	2	920115	Adjustable Caster Dolly, 5X5
2	2	620101	H-Beam, 5x5 Front/Back 8ft
3	1	620102	H-Beam, 5x5 Middle 8ft
4	1	920176	Splice Tube Assembly, 8ft
5	1	920183	Splice Tube Assembly, 3ft
6	-	820104	Counterweight, 50 lb
7	1	N/A	Counterweight Cart

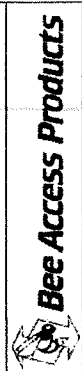


Outreach (ft)	1,000 lb Hoist Rated Capacity		1,250 lb Hoist Rated Capacity		1,500 lb Hoist Rated Capacity	
	50lb counterweights required	Working Fulcrum Load Total (lb) Per Leg (lb)	50lb counterweights required	Working Fulcrum Load Total (lb) Per Leg (lb)	50lb counterweights required	Working Fulcrum Load Total (lb) Per Leg (lb)
1.0	4	1044	5	1305	5	1566
1.5	6	1068	7	1335	8	1602
2.0	8	1092	9	1365	11	1638
2.5	10	1118	12	1398	14	1677
3.0	12	1145	15	1431	18	1718
3.5	14	1174	17	1467	21	1760
4.0	16	1203	20	1504	NA	NA
4.5	19	1235	NA	NA	NA	NA
5.0	22	1268	NA	NA	NA	NA
5.5	24	1303	NA	NA	NA	NA
6.0	27	1340	NA	NA	NA	NA
6.5	30	1379	NA	NA	NA	NA
7.0	34	1420	NA	NA	NA	NA
7.5	37	1464	NA	NA	NA	NA
8.0	41	1511	NA	NA	NA	NA

WARNING:

- This is an approved supplement to the manufacturer's instruction manual.
- Failure to properly install and use this product may result in death or serious injury. Follow the manufacturer's instruction manual. Suspended Scaffold Systems must be installed and dismantled by, or under the supervision of, a trained and competent person.
- Bee Access declines any responsibility for any special layouts, rigging or structural combinations beyond the descriptions of this drawing, or components manufactured by others. Any installation of this equipment other than in strict accordance with this drawing shall be at the operator's risk.
- Designed to be used with Bee Access components only.
- Never let the equipment be moved or operated by unauthorized personnel.
- Never load this equipment above its rated load capacity.
- Do not alter any products and never use it for purposes or in ways for which it was not intended.
- Inspect all equipment before each use. Never use damaged equipment.
- Read and comply with the "Code of Safe Practices for Suspended Powered Scaffolds" issued by the Scaffold & Access Industry Association (available from your supplier).

The information contained in this drawing is the sole property of Bee Access Products. Any reproduction in part or whole without the permission of Bee Access Products is strictly prohibited.



24ft Rolling Outrigger w/ 8ft Splice (Counterweights on Cart)
 Product Line/Project:
Rigging
 Part No. LR1007-544E
 REV. 1
 Sheet 1 of 1

Scale: 1:40
 Do not scale drawing.
 Weight: LBS
 Date: 11-6-17
 Drawn: NS
 Approved: By: [Signature]