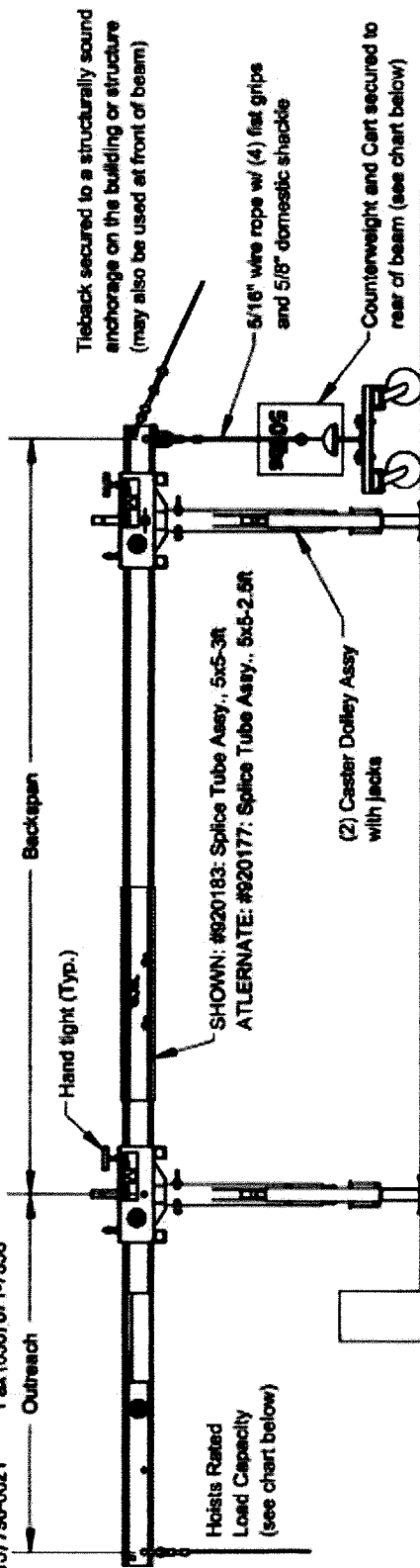
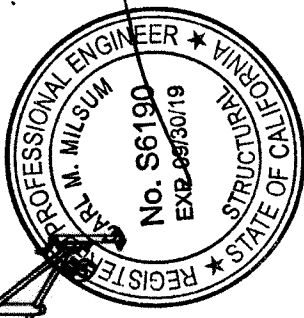


ITEM NO.	QTY.	PART NO.	DESCRIPTION
1	2	820115	Adjustable Caster Dolly, 5x5
2	2	920101	H-Beam, 5x5 Front/Back 8ft
3	1	920183	Splice Tube Assembly, 3ft
4	1	820104	Counterweight, 50 lb
5	1	N/A	Counterweight Cart

**DISTRIBUTED BY**  
**ELEVATOR, LLC**  
 Registered Access and Climbing Equipment  
 Joseph W. Aulley  
 Phone (415) 798-0021 Fax (650) 871-7056



Outreach (ft)	1,000 lb Hoist Rated Capacity		1,250 lb Hoist Rated Capacity		1,500 lb Hoist Rated Capacity	
	soils counterweights required	Working Fulcrum Load Total (lb) Per Leg (lb)	soils counterweights required	Working Fulcrum Load Total (lb) Per Leg (lb)	soils counterweights required	Working Fulcrum Load Total (lb) Per Leg (lb)
1.0	6	1048 534	7	1335 668	8	1602 801
1.5	9	1106 553	11	1382 691	13	1659 829
2.0	13	1146 573	15	1433 718	18	1720 860
2.5	15	1190 595	19	1487 744	23	1785 892
3.0	19	1237 618	24	1546 773	29	1855 928
3.5	23	1288 644	29	1610 805	35	1932 966
4.0	28	1343 671	34	1679 839	NA	NA
4.5	32	1403 701	NA	NA	NA	NA
5.0	38	1469 734	NA	NA	NA	NA



**WARNING:**  
 -Failure to properly install and use this product may result in death or serious injury. Follow the manufacturer's instruction manual. Suspended Scaffold Systems must be installed and dismantled by, or under the supervision of, a trained and competent person.  
 -Bee Access declines any responsibility for any special layouts, rigging or structural combinations beyond the descriptions of this drawing, or components manufactured by others. Any installation of this equipment other than in strict accordance with this drawing shall be at the Operator's risk.  
 -Designed to be used with Bee Access components only.  
 -Never let the equipment be moved or operated by unauthorized personnel.  
 -Never load this equipment above its rated load capacity.  
 -Do not alter any products and never use it for purposes or in ways for which it was not intended.  
 -Inspect all equipment before each use. Never use damaged equipment.  
 -Read and comply with the 'Code of Safe Practices for Suspended Powered Scaffolds' issued by the Scaffold & Access Industry Association (available from your supplier).

The information contained in this drawing is the sole property of Bee Access Products. Any reproduction in part or whole without the written permission of Bee Access Products is strictly prohibited.

Scale: Do not scale drawing. Weight: LBS  
 1:30

Approved By: [Signature] Date: 11-9-17  
 Drawn By: [Signature]

**Bee Access Products**  
 16ft Rolling Outrigger  
 (Counterweight on Cart)

Product Line/Project: RIGGING  
 REV: 1

Part No: LR1007-543E Sheet 1 of 1